

Meet the Headteacher!

Frieth C.E.C School

January 2014

Mrs Jo Reid



Background

- Began teaching in 1996
- Taught in Croydon (South London), East Sussex, Reading, Oxfordshire and Buckinghamshire.
- Taught in every Key Stage
- Have been a year group leader, curriculum leader, Key stage 2 leader, an assistant headteacher, Deputy Headteacher, Acting Headteacher and now Headteacher.

Spare time!

- Mum to a 4 year old and a 7 year old
- Musician, violinist, local orchestras and string ensembles
- Reading
- Dancing
- Theatre trips
- Tudor period of history

What is my vision for Frieth

- Staff and pupils are motivated and eager to learn.
- Pupils make good or better progress within lessons, as well as over time.
- The school learns from and celebrates its Christianity throughout the day.
- Pupils, staff, parents and governors know where they are and where they are aiming to be.
- A new inspiring curriculum, tailored for Frieth pupils is creating a learning buzz.

Learning is fun!

School Development Plan 2013-2014

Curriculum Areas targeted for development are...

- Numeracy: providing challenge through problem solving
- Literacy: Guided reading books and records updated throughout the school
- Literacy: further development of teaching and learning of grammar and punctuation throughout the school
- RE: learning from religion not about religion

School Development Plan 2013-2014

Other areas for school development include:

- Discrete teaching of core subjects
- Special Educational Needs
- Gifted and Talented enrichment opportunities
- EYFS – development of outside area
- Provision for EAL pupils (English as an additional language)

Future School Development 2014-2015

Areas already highlighted for future development:

- Implementation of the new primary National Curriculum
- Assessment changes in light of new National Curriculum
- ICT – Provision of resources
- ICT- computing curriculum resources
- Provision of school meals

Teaching and learning

- All teachers know their pupils as individuals
- Teachers set targets based on next steps as individuals
- Pupils understand what their next steps are and in KS2 decide their next steps with the teacher (N.I.W.)

Guided Reading

What is Guided Reading?

Key principles and features

Aim to encourage children to become enthusiastic, autonomous and thoughtful readers.

Groups of children of similar reading ability work together on the same text.

The teacher guides the children to focus on and apply key strategies while reading independently.

The teacher gives focused attention to support, monitor and assess individuals as they read.

The teacher asks questions, promotes discussion and interacts with the children to extend their thinking and develop their responses to the text.

Children contribute to discussion, talking through their responses to the text. They listen to each other (under the guidance of the teacher)

Children learn from each other and take increasing responsibility for their reading as they become more mature.

The teacher monitors and records children's progress to inform future teaching, targets and assessment.

Numeracy

Two key priorities

- Target setting
- Problem solving

Target setting

- On going
- Quality marking against objectives
- Set by children based on marking and self assessment
- N.I.W = Now I Will

Problem Solving

When calculating
mathematical problems,
remember to use...



Read



Understand



Choose



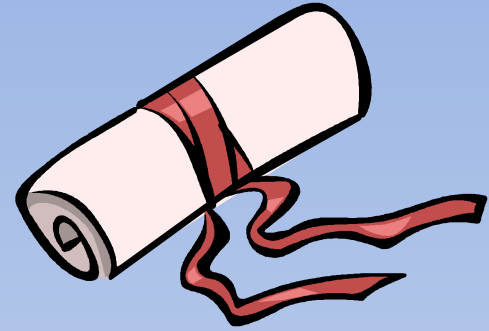
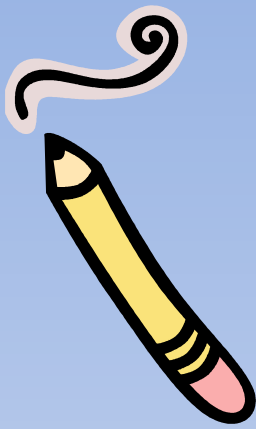
Solve



Answer



Check



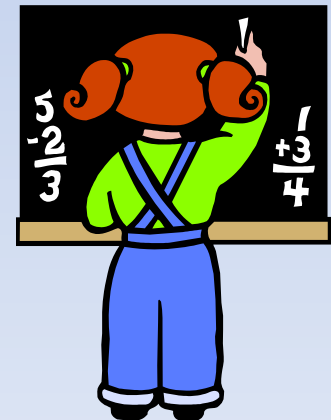
Frieth School Voluntary Contribution Scheme

Update January 2014



Thank you, thank you!

- To all who already contribute a huge thank you.
- It is enabling us to provide discrete year group teaching in KS2 & additional TA's in KS1.
- All parental support is enormously valued and greatly appreciated.



What is it?... a quick recap

- A more formal way for people to donate money to the school.
- Money can be donated either as a single "lump sum" or monthly by direct debit.
- We have set up a separate bank account where all monies will be paid into and which allows us to claim the tax through Gift Aid.



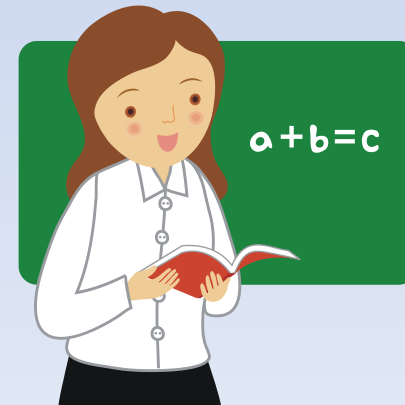
Who manages the fund?

- The scheme will be administered by the School Bursar under the guidance of the Rector.
- All donations are in complete confidence.
- No member of staff or parent will have access to any details of who has given money.



How is the money spent?

- The money will be used to ensure the continuation of 'Project Gold' and the discrete year group teaching. It will also enable us to roll it out throughout the school.
- Decisions on how the money is spent will be made jointly by the Head teacher and the Governing Body.



How much do we need?



- £30,000 per year.
- If each family donates £15 per month
£16,200 50p per day
- If each Family donates £30 per month
£32,400 £1 per day

Special one off January offer!!

- An anonymous benefactor has made a generous offer to fund match any new direct debit set up in the next month.
- A one off matching payment will be made.
- This a fantastic opportunity for the school & the children.



Who can contribute?

- Parents
- Grandparents
- Local Businesses
- Local Residents
- Anyone!



What do we do next?

- Fill in a direct debit form.
- Take a form for friends and family to fill in.
- Suggest to local businesses that they might like to support our local school.



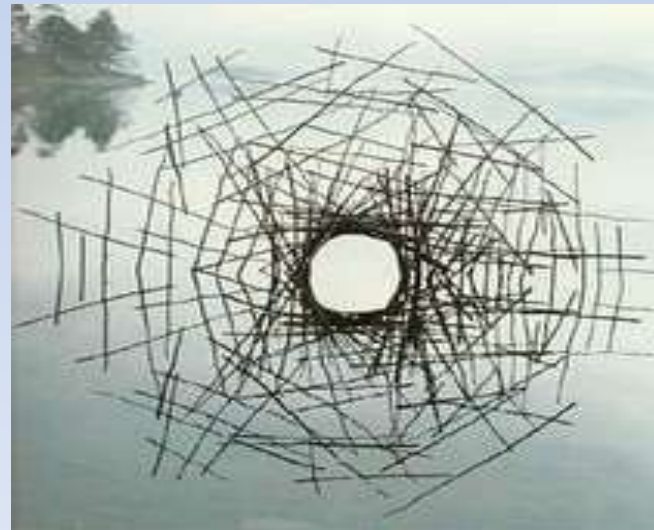


Take a Picture!



Andy Goldsworthy

Patterns and Photography



David Hockney Garrowby Hill



Henri Rousseau

The Surprise



The Arrival of Spring

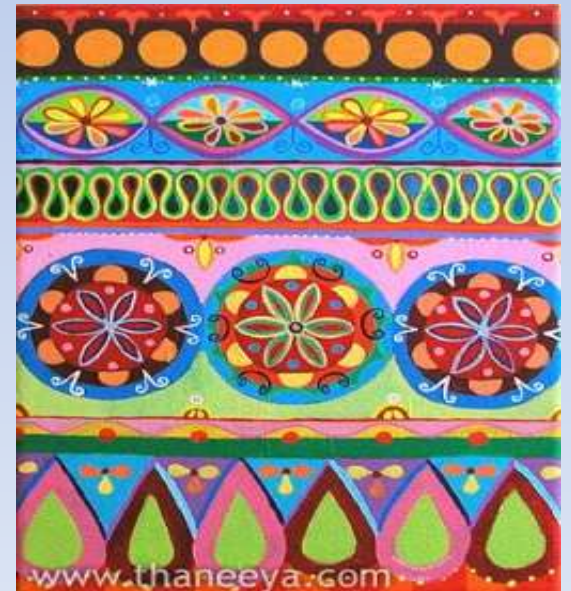
David Hockney



Marian Bantjes' Patterns



© 2008 Thaneeya McArdle



www.thaneeya.com