



Developing our School Building

LONG TERM PLANNING

What are the main priorities?

- ▶ Rewire and new integrated fire alarm system
- ▶ Computing and IT project – Phase 2 & 3
- ▶ Library redesign
- ▶ EYFS resurfacing gross motor control area

Rewiring and Integrated Fire System

- ▶ Current system is life expired and must be replaced
(This does not mean the current system is unsafe, just needs to be replaced before it becomes unfit for purpose)
- ▶ Mainly funded by Capita funding through the diocese
- ▶ School budget will need to provide a substantial amount of the cost
- ▶ Substantial works which should be completed during the summer break.
- ▶ **Project costs: £120,000 of which school must find at least 10%**

Computing and IT Project

- ▶ What has already been achieved?
 - ▶ Three LED interactive whiteboards in school.
 - ▶ Old computers replaced with 15 new curriculum laptops in use
 - ▶ 9 new teacher laptops
 - ▶ Wireless network throughout the school
 - ▶ New support package in place
 - ▶ Monthly on site support
 - ▶ Remote on call support for network
 - ▶ Remote access for staff



Computing and IT Project

What are the next steps?

Phase 2:

- 2 more LED interactive whiteboards

- 8 tablets with pre loaded APPs to support curriculum learning

Projected costs: £8000

Phase 3:

- 8 further tablets to support curriculum learning

- Software and resources for teaching coding for technology

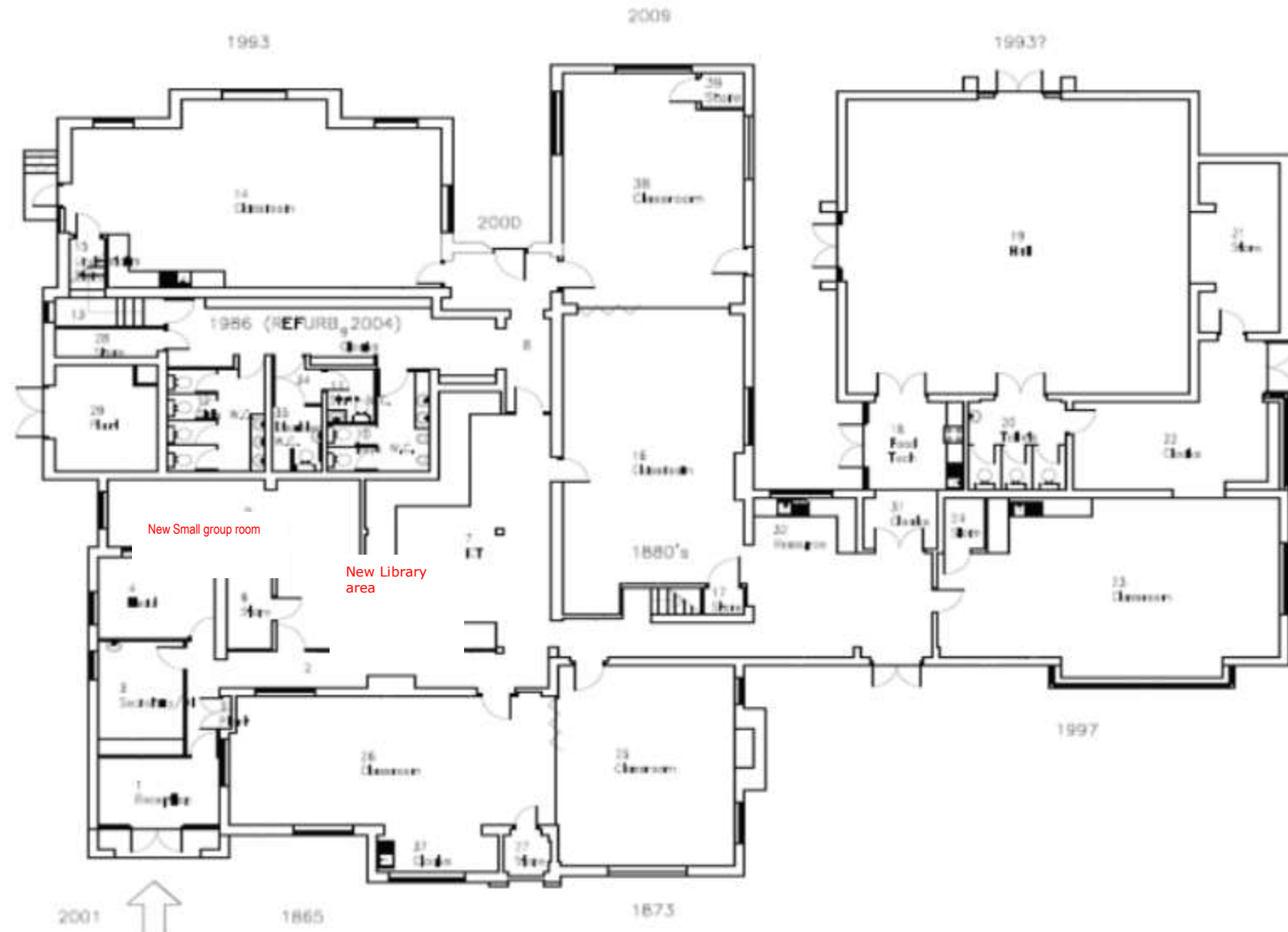
Projected costs: £5000

Computing and IT Project

- ▶ Impact
 - ▶ Teaching and learning not held up by computers not working or loading slowly
 - ▶ Improvement in computing teaching and learning
 - ▶ Improvement in use of IT to support other areas of the curriculum
 - ▶ Better support for teachers
- ▶ The ICT suite no longer needed and needs to be redesigned



1998, 1999, 2000, 2001, 2002, 2003, 2004, 2005, 2006, 2007, 2008, 2009, 2010, 2011, 2012, 2013, 2014, 2015, 2016, 2017, 2018, 2019, 2020, 2021, 2022, 2023, 2024, 2025, 2026, 2027, 2028, 2029, 2030, 2031, 2032, 2033, 2034, 2035, 2036, 2037, 2038, 2039, 2040, 2041, 2042, 2043, 2044, 2045, 2046, 2047, 2048, 2049, 2050, 2051, 2052, 2053, 2054, 2055, 2056, 2057, 2058, 2059, 2060, 2061, 2062, 2063, 2064, 2065, 2066, 2067, 2068, 2069, 2070, 2071, 2072, 2073, 2074, 2075, 2076, 2077, 2078, 2079, 2080, 2081, 2082, 2083, 2084, 2085, 2086, 2087, 2088, 2089, 2090, 2091, 2092, 2093, 2094, 2095, 2096, 2097, 2098, 2099, 2100, 2101, 2102, 2103, 2104, 2105, 2106, 2107, 2108, 2109, 2110, 2111, 2112, 2113, 2114, 2115, 2116, 2117, 2118, 2119, 2120, 2121, 2122, 2123, 2124, 2125, 2126, 2127, 2128, 2129, 2130, 2131, 2132, 2133, 2134, 2135, 2136, 2137, 2138, 2139, 2140, 2141, 2142, 2143, 2144, 2145, 2146, 2147, 2148, 2149, 2150, 2151, 2152, 2153, 2154, 2155, 2156, 2157, 2158, 2159, 2160, 2161, 2162, 2163, 2164, 2165, 2166, 2167, 2168, 2169, 2170, 2171, 2172, 2173, 2174, 2175, 2176, 2177, 2178, 2179, 2180, 2181, 2182, 2183, 2184, 2185, 2186, 2187, 2188, 2189, 2190, 2191, 2192, 2193, 2194, 2195, 2196, 2197, 2198, 2199, 2200, 2201, 2202, 2203, 2204, 2205, 2206, 2207, 2208, 2209, 2210, 2211, 2212, 2213, 2214, 2215, 2216, 2217, 2218, 2219, 2220, 2221, 2222, 2223, 2224, 2225, 2226, 2227, 2228, 2229, 2230, 2231, 2232, 2233, 2234, 2235, 2236, 2237, 2238, 2239, 2240, 2241, 2242, 2243, 2244, 2245, 2246, 2247, 2248, 2249, 2250, 2251, 2252, 2253, 2254, 2255, 2256, 2257, 2258, 2259, 2260, 2261, 2262, 2263, 2264, 2265, 2266, 2267, 2268, 2269, 2270, 2271, 2272, 2273, 2274, 2275, 2276, 2277, 2278, 2279, 2280, 2281, 2282, 2283, 2284, 2285, 2286, 2287, 2288, 2289, 2290, 2291, 2292, 2293, 2294, 2295, 2296, 2297, 2298, 2299, 2300, 2301, 2302, 2303, 2304, 2305, 2306, 2307, 2308, 2309, 2310, 2311, 2312, 2313, 2314, 2315, 2316, 2317, 2318, 2319, 2320, 2321, 2322, 2323, 2324, 2325, 2326, 2327, 2328, 2329, 2330, 2331, 2332, 2333, 2334, 2335, 2336, 2337, 2338, 2339, 2340, 2341, 2342, 2343, 2344, 2345, 2346, 2347, 2348, 2349, 2350, 2351, 2352, 2353, 2354, 2355, 2356, 2357, 2358, 2359, 2360, 2361, 2362, 2363, 2364, 2365, 2366, 2367, 2368, 2369, 2370, 2371, 2372, 2373, 2374, 2375, 2376, 2377, 2378, 2379, 2380, 2381, 2382, 2383, 2384, 2385, 2386, 2387, 2388, 2389, 2390, 2391, 2392, 2393, 2394, 2395, 2396, 2397, 2398, 2399, 2400, 2401, 2402, 2403, 2404, 2405, 2406, 2407, 2408, 2409, 2410, 2411, 2412, 2413, 2414, 2415, 2416, 2417, 2418, 2419, 2420, 2421, 2422, 2423, 2424, 2425, 2426, 2427, 2428, 2429, 2430, 2431, 2432, 2433, 2434, 2435, 2436, 2437, 2438, 2439, 2440, 2441, 2442, 2443, 2444, 2445, 2446, 2447, 2448, 2449, 2450, 2451, 2452, 2453, 2454, 2455, 2456, 2457, 2458, 2459, 2460, 2461, 2462, 2463, 2464, 2465, 2466, 2467, 2468, 2469, 2470, 2471, 2472, 2473, 2474, 2475, 2476, 2477, 2478, 2479, 2480, 2481, 2482, 2483, 2484, 2485, 2486, 2487, 2488, 2489, 2490, 2491, 2492, 2493, 2494, 2495, 2496, 2497, 2498, 2499, 2500, 2501, 2502, 2503, 2504, 2505, 2506, 2507, 2508, 2509, 2510, 2511, 2512, 2513, 2514, 2515, 2516, 2517, 2518, 2519, 2520, 2521, 2522, 2523, 2524, 2525, 2526, 2527, 2528, 2529, 2530, 2531, 2532, 2533, 2534, 2535, 2536, 2537, 2538, 2539, 2540, 2541, 2542, 2543, 2544, 2545, 2546, 2547, 2548, 2549, 2550, 2551, 2552, 2553, 2554, 2555, 2556, 2557, 2558, 2559, 2560, 2561, 2562, 2563, 2564, 2565, 2566, 2567, 2568, 2569, 2570, 2571, 2572, 2573, 2574, 2575, 2576, 2577, 2578, 2579, 2580, 2581, 2582, 2583, 2584, 2585, 2586, 2587, 2588, 2589, 2590, 2591, 2592, 2593, 2594, 2595, 2596, 2597, 2598, 2599, 2600, 2601, 2602, 2603, 2604, 2605, 2606, 2607, 2608, 2609, 2610, 2611, 2612, 2613, 2614, 2615, 2616, 2617, 2618, 2619, 2620, 2621, 2622, 2623, 2624, 2625, 2626, 2627, 2628, 2629, 2630, 2631, 2632, 2633, 2634, 2635, 2636, 2637, 2638, 2639, 2640, 2641, 2642, 2643, 2644, 2645, 2646, 2647, 2648, 2649, 2650, 2651, 2652, 2653, 2654, 2655, 2656, 2657, 2658, 2659, 2660, 2661, 2662, 2663, 2664, 2665, 2666, 2667, 2668, 2669, 2670, 2671, 2672, 2673, 2674, 2675, 2676, 2677, 2678, 2679, 26



Library redesign



- ▶ Research by the National Literacy Trust, published in 2011, found that young people who read at or above the expected level for their age are three times more likely to be school library users than those who read below the expected level for their age. Young people who use the school library were also found to hold more positive attitudes towards reading than young people who do not use it.

‘I can tell you if a school has a good library five minutes after entering it... It is in the eyes of the kids.’
(Anthony Horowitz)

Projected Costs: £15000



Gross motor control area resurfacing

Why is it a priority?

- Trees causing subsidence

- New shed needed

- New surfacing needed to provide level area for gross motor control

Funding

- Donations

- PE sports funding

- Applying for Awards for All funding

Projected costs: £20000



Helping to give our children the best



Paying for what's needed

- ▶ Where does the government money we receive go? A 3 minute summary from Martin Walker.
- ▶ We need about £60K for the outlined projects in 2016.
- ▶ After allowing for using school budget and PTA funds we still need to find about £30K;
- ▶ The **School Donation Fund** has about £10K after 2015 IT spending;
- ▶ So we need to raise £20K in 2016;
- ▶ Existing regular donations will account for another £7K;
- ▶ So we need to find an additional £13K;
- ▶ If every family donated £2.75 a week then we would do it!



Thank you, thank you!

To all who already contribute.
But only about 10% of families do!



What is the School Donation Fund?

- ▶ A more formal way for people to donate money to the school.
- ▶ Money can be donated as a single "lump sum" or monthly by direct debit - preferred.
- ▶ We have a separate bank account which allows us to claim the tax through Gift Aid.
- ▶ The scheme is administered by the School Bursar under the guidance of the Trustees.
- ▶ All donations are in complete confidence.
- ▶ No member of staff or parent will have access to any details of who has given.
- ▶ Just fill in the direct debit form - every penny helps our children.

